

Block 210 – Opening Id 1723761
Access: The block is accessed via the Ashnola FSR and within the Lower Similkameen Community Forest. Access to block is via truck and ATV. From the town of Keremeos (town center) drive approximately 4.3 km west on highway 3, turn left at Red Bridge onto the Ashnola Road. Continue for another 10.4 km to the end of the paved road where a 0 km board marks the start of the Ashnola FSR. Continue along the Ashnola FSR 29km. Turn right onto the Young Creek FSR. Continue approximately 4.2km and turn left onto Br. YC-100. Continue 1.6km to Block 210.

3.9 ha - Plant spring/summer 2021 Pli70% Fdi20%Lw10% at 1,700 sph with 2+0 PSB 410 stock
Reduce minimum inter-tree spacing down to 1.0m, as required, to attain target stocking standard
BEC – MSk1
Lat / Long – 49.09.01 / 120.19.36
Elevation – 1300-1400

Lower Similkameen Community Forest Ltd. Partnership

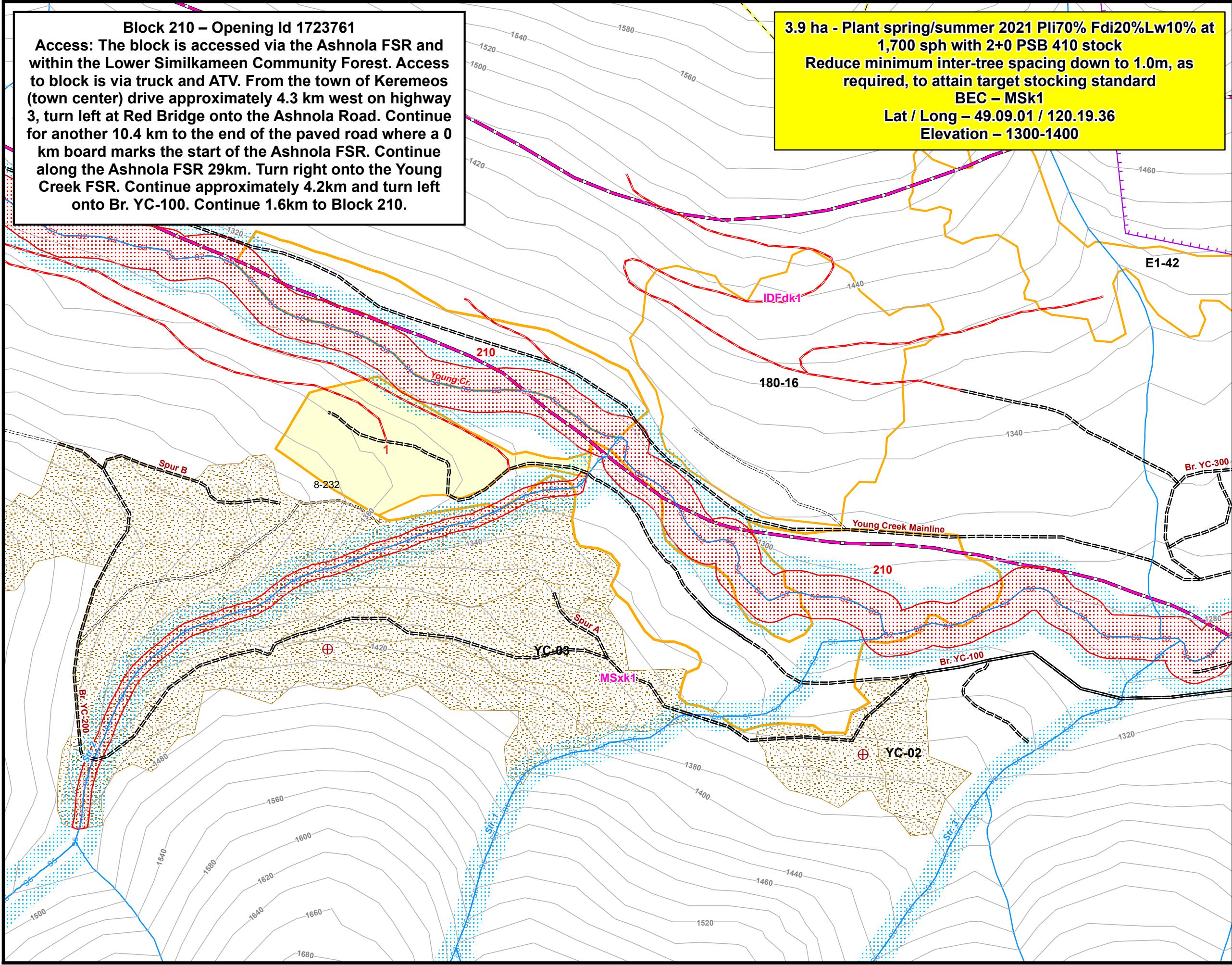
Planting Map

Block: 210
Fire #: K62690

Mapsheet: 92H.019
 Operating Area: Cool Creek Wildfire
 TSA / TSB: 22/22A
 Forest Region: Thompson-Okanagan
 Forest District: Okanagan Shuswap
 Latitude: 49° 09' 39" N
 Longitude: 120° 19' 29" W
Emergency UTM Coordinates: 695021E, 5448799N

Site Plan Information

Productive SU	Classification	Area (ha)
1	BEC – MSk1	3.9
2		
3		
		NAR 3.9
NPAT		0.0
PAS		0.0
WTRA		0.0
TLA		0.0
		TAUP 3.9



Block Information

- Block
- Wildlife Tree Retention Area
- Timber Leave Area
- Existing Blocks
- Falling Corner
- Machine Crossing
- Resource Feature
- Block Center
- Heli Pad

Access Management

- Forest Service Road
- Proposed Permanent
- Gravel Pit
- Bridge

Riparian Information

- Reach Break
- NCD
- Fish Sensitive Zone
- S1; S2; S3; S4
- S5; S6;
- Riparian Reserve Zone
- Riparian Management Zone

Physiographic Data

- Break # Rock
- Draw
- Gully
- Ridge
- Windthrow
- Slide

Base Data

- Forest Cover
- Contour
- Ocean/Lake
- Wetland

CMT Information

- CMT - Standing Planked
- CMT - Standing Test Hole
- CMT - Stump
- CMT - Stump With Felled Log
- CMT - Worked Log

Resource Management

- Ungulate Winter Range
- Wildlife Habitat Areas
- OGMAs Approved
- BEC
- Parks (Protected Areas)
- Indian Reserves

1:5,000

0 50 100 150 Meters

Date Printed: Tuesday, September 10, 2019
 Completed by: CFM
 Prepared by:

Map Coordinates: UTM NAD 83 Zone 10
 Projection: NAD 83 BC Environment Albers