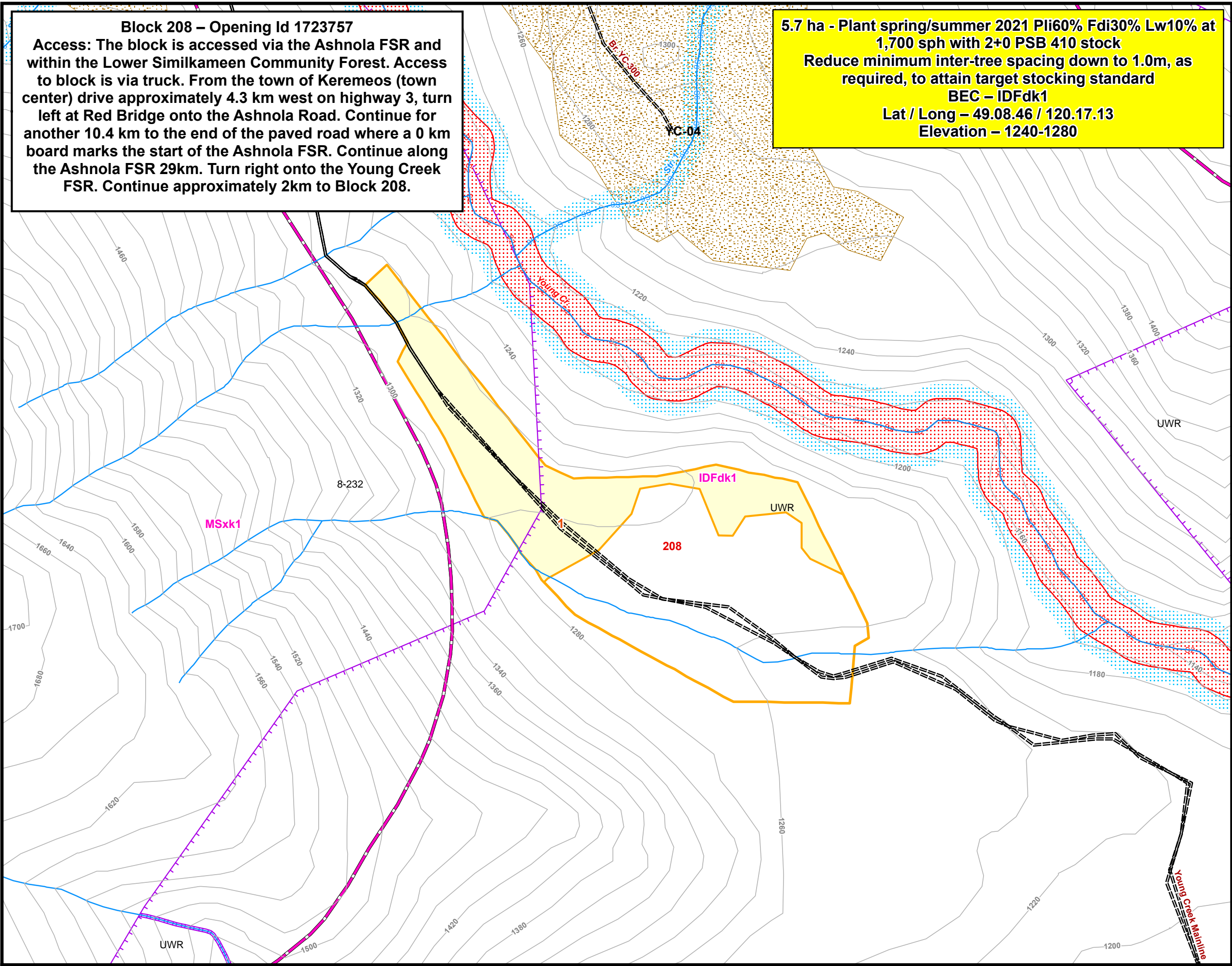


Block 208 – Opening Id 1723757
Access: The block is accessed via the Ashnola FSR and within the Lower Similkameen Community Forest. Access to block is via truck. From the town of Keremeos (town center) drive approximately 4.3 km west on highway 3, turn left at Red Bridge onto the Ashnola Road. Continue for another 10.4 km to the end of the paved road where a 0 km board marks the start of the Ashnola FSR. Continue along the Ashnola FSR 29km. Turn right onto the Young Creek FSR. Continue approximately 2km to Block 208.

5.7 ha - Plant spring/summer 2021 Pli60% Fdi30% Lw10% at 1,700 sph with 2+0 PSB 410 stock
Reduce minimum inter-tree spacing down to 1.0m, as required, to attain target stocking standard
BEC – IDFdk1
Lat / Long – 49.08.46 / 120.17.13
Elevation – 1240-1280



Lower Similkameen Community Forest Ltd. Partnership

Planting Map

Block: 208

Fire #: K62690

Mapsheets: TBA

Operating Area: Cool Creek Wildfire

TSA / TSB: 22/22A

Forest Region: Thompson-Okanagan

Forest District: Okanagan Shuswap

Latitude: 49° 08' 49" N

Longitude: 120° 17' 21" W

Emergency UTM Coordinates: 697666E, 5447333N

Site Plan Information		
Productive SU	Classification	Area (ha)
1	BEC – IDFdk1	5.7
2		
3		
		NAR 5.7
NPNAT		0.0
PAS		0.0
WTRA		0.0
TLA		0.0
		TAUP 5.7

Block Information

Block

Wildlife Tree Rentention Area

Timber Leave Area

Existing Blocks

Falling Corner

Machine Crossing

Resource Feature

Block Center

Heli Pad

Physiographic Data

Break

Draw

Gully

Ridge

Rock

Windthrow

Slide

CMT Information

CMT - Standing Planked

CMT - Standing Test Hole

CMT - Stump

CMT - Stump With Felled Log

CMT - Worked Log

Access Management

Forest Service Road

Proposed Permanent

Gravel Pit

Bridge

Riparian Information

Reach Break

NCD

Fish Sensitive Zone

S1; S2; S3; S4

S5; S6;

Riparian Reserve Zone

Riparian Management Zone

Base Data

Forest Cover

Contour

Ocean/Lake

Wetland

Resource Management

Ungulate Winter Range

Wildlife Habitat Areas

OGMAs Approved

BEC

Parks (Protected Areas)

Indian Reserves

1:5,000

0 50 100 150

Meters

Date Printed: Monday, September 9, 2019

Completed by: CFM

Prepared by:

Map Coordinates: UTM NAD 83 Zone 10

Projection: NAD 83 BC Environment Albers

Declination: 16 ° 57'E